

Postal Code 78745

Residential Statistics



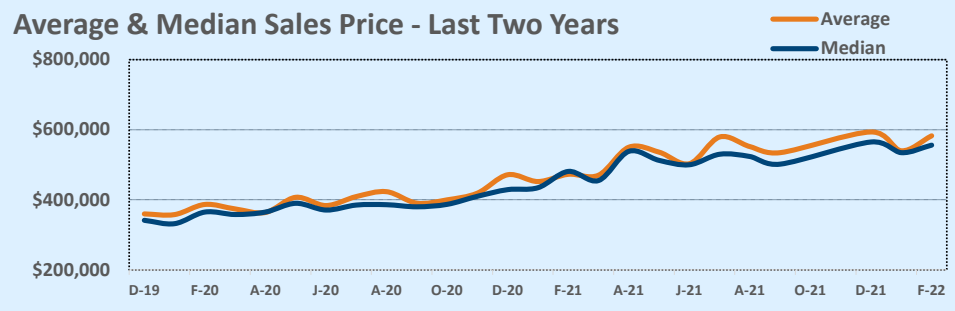
December 2021

Listings	This Month			Year-to-Date		
	Dec 2021	Dec 2020	Change	2021	2020	Change
Single Family Sales	74	79	-6.3%	824	823	+0.1%
Condo/TH Sales	17	17	--	216	227	-4.8%
Total Sales	91	96	-5.2%	1,040	1,050	-1.0%
New Homes Only	6	14	-57.1%	51	75	-32.0%
Resale Only	85	82	+3.7%	989	975	+1.4%
Sales Volume	\$54,016,647	\$45,260,738	+19.3%	\$549,632,884	\$421,917,062	+30.3%
New Listings	40	66	-39.4%	1,115	1,157	-3.6%
Pending	--	--	--	--	--	--
Withdrawn	4	1	+300.0%	27	26	+3.8%
Expired	4	1	+300.0%	27	26	+3.8%
Months of Inventory	0.3	0.5	-16.7%	N/A	N/A	--

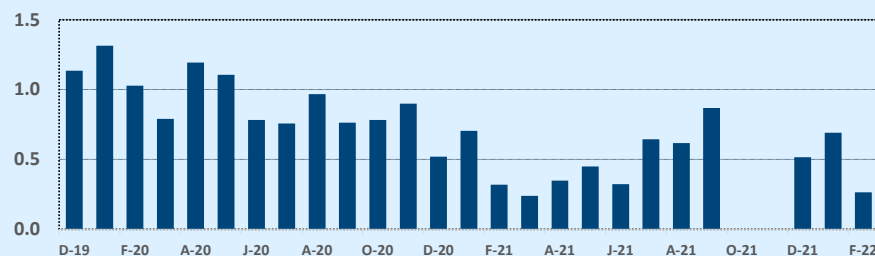
Price Range	This Month			Year-to-Date		
	New	Sales	DOM	New	Sales	DOM
\$149,999 or under	--	--	--	1	1	11
\$150,000-\$199,999	1	1	15	14	12	20
\$200,000-\$249,999	--	--	--	14	12	12
\$250,000-\$299,999	--	1	9	30	21	25
\$300,000-\$349,999	2	3	6	43	45	17
\$350,000-\$399,999	3	4	35	113	84	14
\$400,000-\$449,999	2	9	12	141	130	13
\$450,000-\$499,999	4	13	17	216	183	12
\$500,000-\$549,999	7	11	23	148	160	11
\$550,000-\$599,999	9	17	23	142	133	11
\$600,000-\$699,999	8	12	29	130	142	15
\$700,000-\$799,999	2	11	13	57	56	11
\$800,000-\$899,999	1	3	20	31	24	12
\$900,000-\$999,999	--	2	54	16	21	13
\$1M - \$1.99M	1	4	18	19	16	14
\$2M - \$2.99M	--	--	--	--	--	--
\$3M+	--	--	--	--	--	--
Totals	40	91	21	1,115	1,040	13

Average	This Month			Year-to-Date		
	Dec 2021	Dec 2020	Change	2021	2020	Change
List Price	\$583,373	\$467,837	+24.7%	\$504,926	\$400,053	+26.2%
List Price/SqFt	\$383	\$315	+21.5%	\$353	\$275	+28.3%
Sold Price	\$593,590	\$471,466	+25.9%	\$528,493	\$401,826	+31.5%
Sold Price/SqFt	\$391	\$318	+21.5%	\$370	\$276	+33.9%
Sold Price / Orig LP	102.2%	101.0%	+21.5%	105.3%	100.6%	+4.7%
Days on Market	21	22	-6.1%	13	24	-44.7%

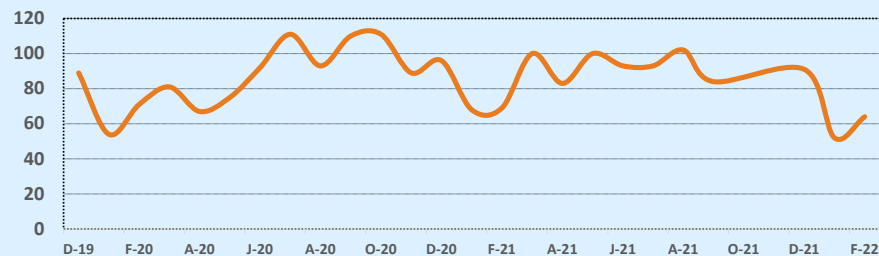
Median	This Month			Year-to-Date		
	Dec 2021	Dec 2020	Change	2021	2020	Change
List Price	\$550,000	\$425,000	+29.4%	\$484,950	\$380,000	+27.6%
List Price/SqFt	\$367	\$305	+20.3%	\$346	\$266	+30.2%
Sold Price	\$565,000	\$429,000	+31.7%	\$504,500	\$381,500	+32.2%
Sold Price/SqFt	\$378	\$308	+22.6%	\$362	\$268	+35.1%
Sold Price / Orig LP	100.0%	100.0%	+0.0%	102.7%	100.0%	+2.7%
Days on Market	10	10	+5.3%	6	7	-14.3%



Months of Inventory - Last Two Years



Number of Sales - Last Two Years



Based on information from the Austin Board of REALTORS® (alternatively, from ACTRIS). Neither the Board nor ACTRIS guarantees or is in any way responsible for its accuracy. The Austin Board of REALTORS®, ACTRIS and their affiliates provide the MLS and all content therein "AS IS" and without any warranty, express or implied. Data maintained by the Board or ACTRIS may not reflect all real estate activity in the market.